

OPAS Workstation Installation – Standard FoxPro Environment

What you need:

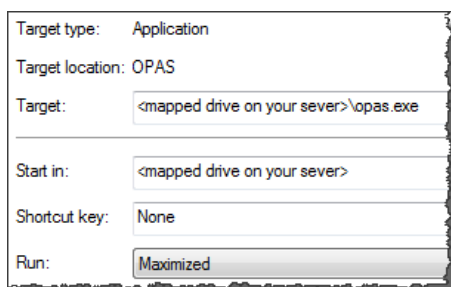
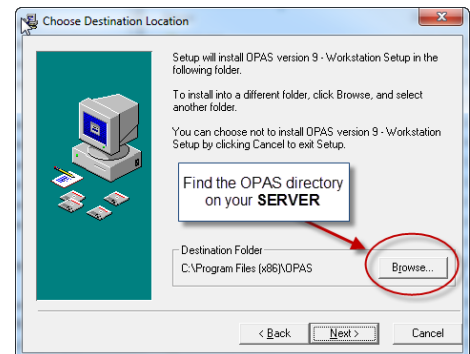
- A Windows® PC running Windows 98, 2000, XP or Windows 7
- If running any version of Windows above 2000, you may need to log in to the computer as Administrator or a user that has program installation rights
- 50 MB of hard-disk space and a screen resolution of at least 1024 x 768
- A **mapped drive** to the server on which OPAS is installed and **full control** over that OPAS folder. Even if a person has read-only access within OPAS itself, he/she must have full control over the folder so that license tokens and other information can be properly managed.
- The assumption is made that the PC also has Microsoft Office or Word, Excel and (optionally) Outlook

The procedure should take 10-15 minutes.

STEP ONE – Install the OPAS Windows™ Files

You must install the Windows 'support' files that allow OPAS to run. These are standard DLL, OCX and other files.

1. You will have been given a link to download the file called **WorkstationSetup.exe**. This is the installation file for each computer that wishes to run. Double-click WorkstationSetup.exe to run it.
2. At the Welcome screen, click **Next**
3. At the Choose Destination Location screen, select the Mapped OPAS drive on the Server (you can click Browse... to locate it) and click **Next**
4. At the **Ready to Install** screen, click **Next**.
5. The Workstation Setup routine will copy the necessary files to your computer's Windows directory. When finished, you may be prompted to restart or reboot your computer, and should do so.



Check your work – when the Workstation Setup is done, it will have placed an OPAS icon on your desktop. **Right-click** the icon, choose Properties and Shortcut. Make sure the **Start In** and **Target** properties of the OPAS icon point to the server. You may also want to set the application to run in a maximized window.

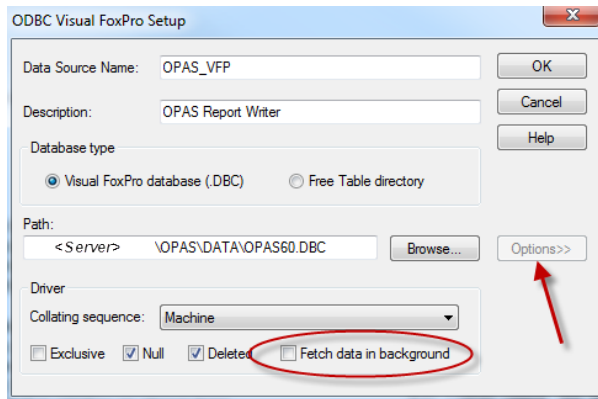
STEP TWO – Set up the ODBC connection so OPAS can run Word and Excel reports

Not every report needs an ODBC connection, but most do. This connection will allow OPAS and Word/Excel to communicate.



NOTE – if you are installing OPAS on a workstation that uses a 64-bit operating system, you **must** use the 32-bit ODBC drivers. Those can be found at: **C:\Windows\SysWOW64\odbcad32.exe**

1. From the desktop, launch the Control Panel.
2. In Control Panel, double-click on the **32bitODBC** Icon (on some computers, this might read “ODBC Data Sources (32bit)” and on Windows 2000 and XP computers this will be in the “Administrative Tools” area)
3. On the next screen, click the **System DNS** tab (the second one from the left). At the System DNS screen, click **Add**.
4. Choose the **Microsoft Visual Fox Pro Driver** version **6.01.....** There may be more than one Visual FoxPro or FoxPro driver(s) on your computer, depending upon what other program(s) are installed. You only need be sure you select the one that is version 6.01 or above. You may need to scroll to the right to see the version number. Click **Finish**
5. Fill out the Visual FoxPro Setup window as shown here –



Data Source Name = OPAS_VFP
Description = OPAS Report Writer

Note that the **Path** will be the path to the main OPAS database, on the Server.

Use the **Browse** button to locate the database. Navigate first to the OPAS folder on the server (your mapped drive), then within the OPAS folder, open the **DATA** folder. And within the DATA folder select this single file **OPAS60.DBC**.

6. Finally, click the **Options** button in the lower right corner (shown by the red arrow above). Then **un-check** the box that reads, “Fetch data in Background”. Leave all other settings just as they are. The screen should look like the one shown above.
7. Click **OK** and then **OK** again to exit the 32bit ODBC Setup.

You are now ready to use OPAS!